

READ THE INSTRUCTIONS THOROUGHLY AND COMPLETELY BEFORE BEGINNING THE INSTALLATION.



PART# 836725-4
2.5" FRONT LEVELING SPACERS
07-UP TOYOTA TUNDRA 4WD

SPACER PARTS LIST

| | |
|---|------------------------|
| 2 | 2.5" STRUT SPACER |
| 2 | 3013TB SWAY BAR SPACER |

DIFFERENTIAL DROP PARTS LIST - 4WD ONLY

| | |
|---|---------------------------|
| 2 | DIFFERENTIAL SPACER |
| 3 | SKID PLATE SPACER |
| 2 | HEX BOLT 9/16" – 18 X 6" |
| 2 | FLAT WASHER 9/16" |
| 2 | NYLOCK NUT 9/16 – 18 |
| 3 | HEX BOLT M8 – 1.25 x 30MM |
| 3 | FLAT WASHER M8 |



*Approximate
install time 2 hrs.*



*Will clear up to 33" tires with the
correct wheel & tire combination.*

NOTE

Please double check the parts list before beginning installation, to ensure all parts are present. If there is something missing, please contact Maxtrac Suspension immediately (714) 630-0363.

PRIOR TO INSTALLATION:

- 1. Factory service manual is recommended to have on hand.**
- 2. Secure and properly block vehicle prior to beginning installation**
- 3. Always wear safety glasses when using power tools or working under the vehicle**
- 4. Modifications to any part will void the warranty associated with that product.**

⚠ AFTER REMOVING PARTS FROM VEHICLE, SAVE HARDWARE FOR REINSTALLATION.

STEP 1: Jack up the front of the truck and support under the frame rails with jack stands.

STEP 2: Disconnect the sway bar end link from the lower control arm by removing the mounting bolt.

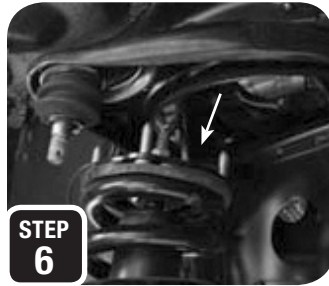
STEP 3: Loosen and remove the 4 nuts at the top of the strut and the single bolt at the bottom of the strut.

STEP 4: Remove the abs guide clip on the back side of the upper arm so that the line does not get damaged.



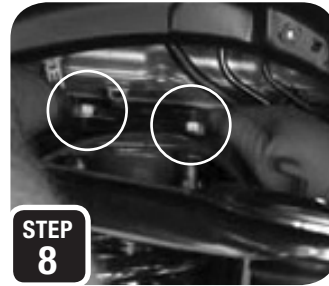
STEP 5: Next, remove the clip at the upper ball joint nut, loosen the nut but do not remove, and break the ball joint loose by hitting the side of the spindle with a hammer. The nut will catch the spindle, then remove the nut (*never hit the ball joint on the threads*).

STEP 6: Pry down the lower control arm and remove the strut.



STEP 7: Attach the strut spacer to the top of the strut using the factory nuts and tighten (*the spacer will only fit one way*).

STEP 8: Line up the strut spacer in the frame and pry down on the lower control arm to get the strut back in its mounting pocket. Once in, install the bolt at the bottom and tighten, then install the provided nuts at the top and tighten.



STEP 9: Place a floor jack under the lower control arm and jack up the truck to compress the coil. Now re-attach the upper control arm to the spindle, tighten the castle nut, and re-install the factory clip.

STEP 10: Loosen the bolts mounting the sway bar to the frame

on both sides and install the provided spacers one at a time then tighten.

STEP 11: It is easiest to re-attach the sway bar end link to the lower control arm when the truck is back on the ground. Wait until the end to re-attach the sway bar to the lower control arm.



STEP 12: Loosen the 5 mounting bolts for the factory skid plate and remove.

STEP 13: Place an adjustable jack under the front differential and remove the two front mounting bolts. Lower the jack down and install the provided 1" tall spacers. Re-use the factory cup shaped washer at the bottom along with the provided $\frac{9}{16}$ " bolt

and the provided washer and nylock nut at the top.

STEP 14: Once the diff drop spacers are tight, re-install the factory skid plate. You will use the 3 provided $\frac{1}{2}$ " tall spacers along with the provided longer M8 bolts to attach the skid plate near the diff.



NOTE

IT IS RECOMMENDED THAT YOU HAVE YOUR VEHICLE'S ALIGNMENT CHECKED WHENEVER INSTALLING NEW SUSPENSION. IT IS ALSO RECOMMENDED THAT YOU ADJUST YOUR HEADLIGHTS WHENEVER YOUR VEHICLE'S RIDE HEIGHT IS ALTERED.