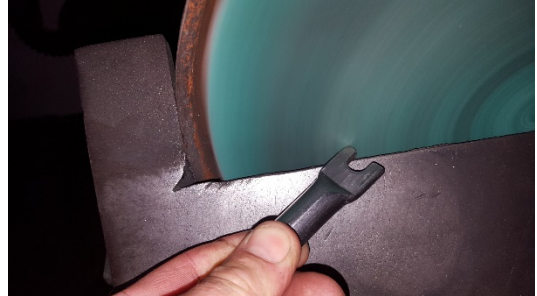


3" BAR PIN INSTALLATION

To ensure maximum bushing life and to avoid tearing your shock bushing during bar pin installation, follow these steps:



The Max Trac 3" bar pin has square ends that can be somewhat difficult to press into a bushing.



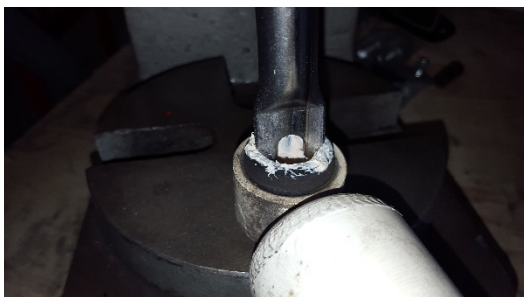
1) Use a sander or a grinder to chamfer one end of the bar pin



The bar pin should look like this when chamfering is complete.



2) Lube up your shock bushings thoroughly with grease or lubricant.



3) Press the bar pin into the bushing using a Press or vice. The chamfered end will funnel itself into the bushing.



This is how it should look when completely installed.