

300560C

1988-1998 GM 1500

## C-NOTCH FRAME SUPPORT

### HARDWARE:

1/2-13 X 1 1/2 HEX BOLT (20)      1/2" FLAT WASHER (40)      3/8" FLAT WASHER (2)  
1/2-13 NYLOCK NUT (20)      3/8-16 NYLOCK NUT (2)      BUMP STOPS (2)

**Note: It will be easier to find the exact point where the axle hits the frame if you install your lowering kit first.**

- 1) 1) Jack up the rear of the vehicle and support under the frame rails with jack stands. Allow the suspension to extend to full droop and remove the wheels.
- 2) Place a floor jack under the rear diff and jack up the axle. With the axle now close to the frame, scribe a center mark of where the axle will contact the frame. (SEE IMAGE 1)  
**Note: This mark will be the center of your cut for the frame support.**
- 3) Mark the area that needs to be cut out. This can be achieved by:
  - measuring the "C" area of the fame support and drawing that onto the frame with your center mark at the center of your cut out (IMAGE 2)
  - by placing the frame support up to the frame and tracing the outer shape of the C
  - or by making a template of the frame support and tracing that onto the frame.
- 4) Cut out the scribed line using a plasma cutter or other suitable cutting device.
- 5) With the cut-out section removed, test fit the frame support to ensure it sits up flush and proper to the frame. If it does not, then keep trimming until it does. **Note:**
- 6) Remove the frame support, grind all cut edges smooth and spray paint for rust prevention.
- 7) Clamp the frame support back into place. Using the holes in the support as a guide, drill out all mounting holes with a 7/16" drill bit.
- 8) Install all of the mounting hardware and tighten.
- 9) Attach the low-profile bump stop to the frame support using the provided 3/8" hardware.
- 10) Repeat steps 1-9 on the other side.



IMAGE 1

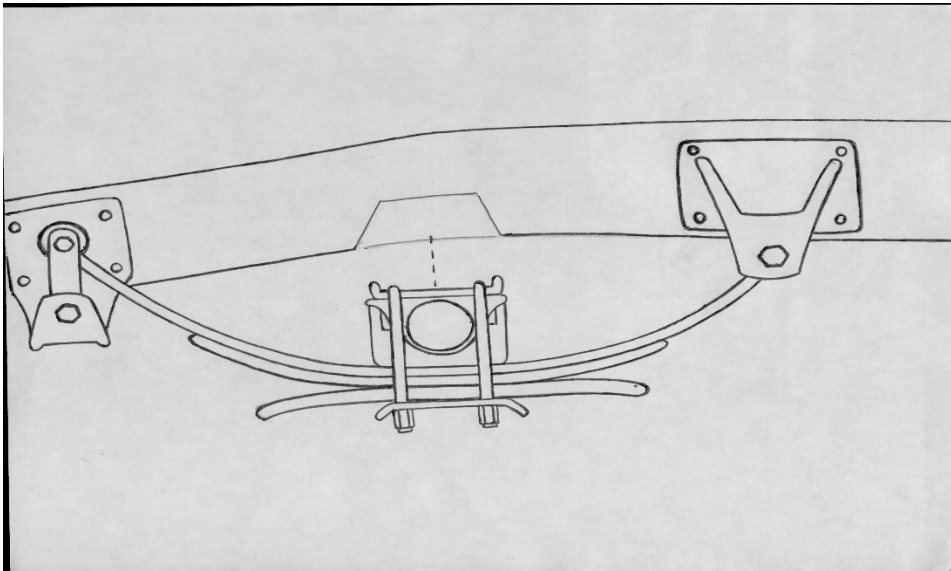


IMAGE 2

