



MAX TRAC SUSPENSION  
4522 E. EISENHOWER CIR.  
ANAHEIM, CA 92807  
714-630-0363  
[WWW.MAXTRACSUSPENSION.COM](http://WWW.MAXTRACSUSPENSION.COM)  
[SALES@MAXTRACSUSPENSION.COM](mailto:SALES@MAXTRACSUSPENSION.COM)

**PRODUCT: 611500**  
**2014+ GM 1500 W/ TWO PIECE DRIVESHAFT**  
**DRIVELINE CORRECTION KIT**

**PARTS LIST**

**QTY**

CROSS MEMBER	1
4 DEGREE AXLE SHIMS	2
CENTER PIN SPACERS	2
7/16-14 X 1 1/4 HEX CAP SCREW	6
7/16-14 NYLON NUT	6
7/16 FLAT WASHER	12

PLEASE DOUBLE CHECK THE PARTS LIST BEFORE BEGINNING INSTALLATION TO ENSURE ALL PARTS ARE PRESENT. IF THERE IS SOMETHING MISSING, PLEASE CONTACT MAX TRAC IMMEDIATELY 714-630-0363

READ THE INSTRUCTIONS THOROUGHLY AND COMPLETELY BEFORE BEGINNING THE INSTALLATION.

**PRIOR TO INSTALLATION:**

1. Factory service manual is recommended to have on hand.
2. Secure and properly block vehicle prior to beginning installation.
3. Always wear safety glasses when using power tools or working under the vehicle.
4. Modifications to any part will void the warranty associated with that product.

After removing parts from vehicle, save hardware for reinstallation

**IT IS RECOMMENDED THAT YOU HAVE YOUR VEHICLE'S ALIGNMENT CHECKED WHENEVER INSTALLING NEW SUSPENSION. IT IS ALSO RECOMMENDED THAT YOU ADJUST YOUR HEADLIGHTS WHENEVER YOUR VEHICLE'S RIDE HEIGHT IS ALTERED.**

**NOTE: THIS KIT WILL CORRECT DRIVELINE ANGLES AND DRASTICALLY IMPROVE VIBRATION SYMPTOMS, "BUT SOME DRIVELINE VIBRATION MAY STILL BE EXPERIENCED"**

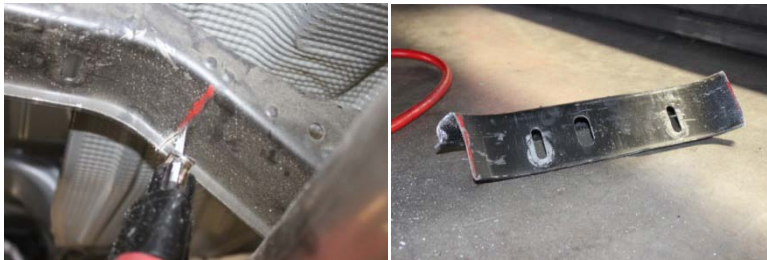
- 1) UNBOLT THE CARRIER BEARING AND SUPPORT OFF TO THE SIDE, & REMOVE THE FACTORY ALUMINUM SPACERS. (THEY WILL BE INSTALLED LATER)



- 2) HOOK A TAPE MEASURE ON THE ORIGINAL CARRIER BEARING SLOTTED HOLE AND DRAW A LINE 3" OUTWARD: REPEAT ON OTHER SIDE.



- 3) CUT THE CROSS MEMBER AT BOTH LINES AND REMOVE CENTER SECTION.



- 4) PUSH YOUR NEW MAX TRAC CROSS MEMBER UP TIGHTLY AGAINST THE ORIGINAL CROSS MEMBER AND CLAMP IT. ALSO INSTALL THE BOLTS ON THE VERTICAL SIDE OF THE CROSS MEMBER TO HELP HOLD IT IN PLACE.



- 5) USING THE MAX TRAC CROSS MEMBER AS A GUIDE, DRILL 4 HOLES VERTICALLY AND INSTALL EACH BOLT AS YOU GO.
- 6) ONCE ALL THE HOLES ARE DRILLED, TIGHTEN ALL 6 BOLTS.
- 7) BOLT UP THE CARRIER BEARING TO THE NEW CROSS MEMBER USING THE ORIGINAL HARDWARE, BUT THIS TIME THE ALUMINUM SPACERS WILL GO ON TOP OF THE CROSS MEMBER.



- 8) SUPPORT THE REAR AXLE WITH AN ADJUSTABLE JACK AND REMOVE THE U-BOLTS ON ONE SIDE.
- 9) JACK THE AXLE UP SO THAT IT IS OFF OF THE LEAF SPRINGS AND REMOVE THE AXLE RELOCATOR.



- 10) PUT TWO CLAMPS ON THE LEAF PACK TO HOLD IT TOGETHER AND REMOVE THE CENTER PIN.
- 11) INSTALL THE PROVIDED SLEEVE AND THEN RE-INSTALL THE CENTER PIN.



- 12) REMOVE CLAMPS AND INSTALL THE 4 DEGREE SHIM WITH THE CENTER PIN IN THE HOLE AND THE SHORT SIDE FACING THE FRONT OF THE TRUCK.
- 13) RE-INSTALL THE AXLE RELOCATOR AND U-BOLTS. TORQUE U-BOLTS TO 100 FT/LBS



- 14) REPEAT ON OTHER SIDE