



PART# 830820R
2021+ GM SUV (NON- AIR RIDE)

2" REAR STRUT SPACERS



2 HOUR INSTALL TIME

Components	Hardware
(2) 830820R STRUT SPACER	(6) M10-1.25 FLANGE NUT

Please double check the parts list before beginning installation to ensure all parts are present. If there is something missing, please contact Maxtrac Suspension (714) 630-0363. Please have the boxes present if parts are missing or damaged

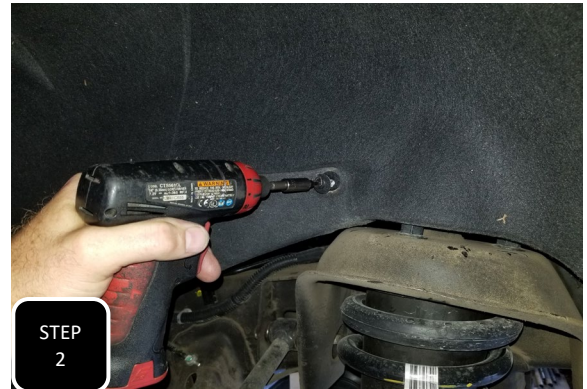
PRIOR TO INSTALLATION:

- 1. Factory service manual is recommended to have on hand.**
- 2. Secure and properly block vehicle prior to beginning installation.**
- 3. Always wear safety glasses when using power tools or working under the vehicle**
- 4 Modification to any part will void the warranty associated with that product**

AFTER REMOVING PARTS FROM VEHICLE, SAVE HARDWARE FOR REINSTALLATION



Step 1 Jack up the rear of the vehicle and support under the frame with jack stands.



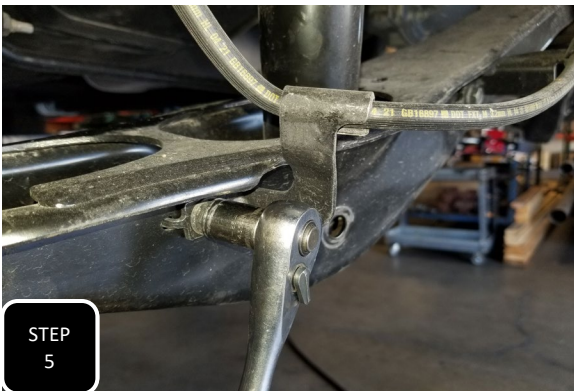
Step 2 Remove the two torx head bolts that attach the wheel well skirt to allow easier access to the top of the strut.



Step 3 Remove the three nuts attaching the top of the strut to the frame and save for re-installation.



Step 4 Loosen and remove the lower strut mounting bolt and save for re-installation.



Step 5 Unbolt both brake line guide brackets from the lower control arm and separate.



Step 6 Loosen and remove the bolt attaching the lower control arm to the spindle. Save the bolt for re-installation.





STEP
7

Step 7 Press down on the lower control arm and remove the strut assembly.

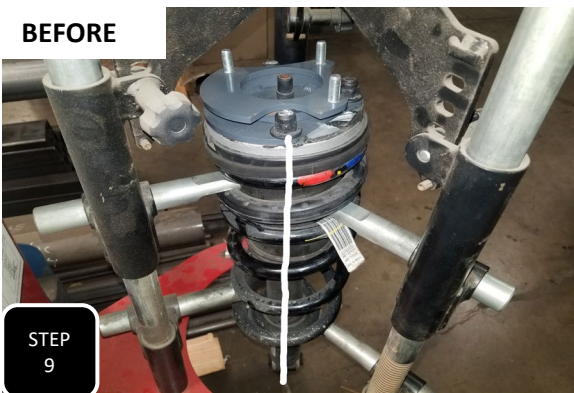


STEP
8



STEP
8

Step 8 Attach the strut spacer to the top of the strut using the factory nuts and tighten. Next, using a suitable cutting device, cut off the remainder of each factory stud so that they do not stick out higher than the top of the spacer.

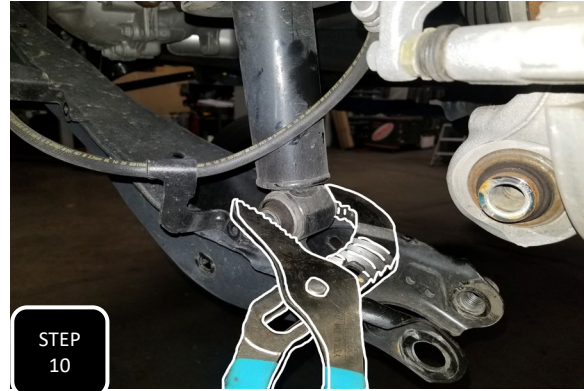
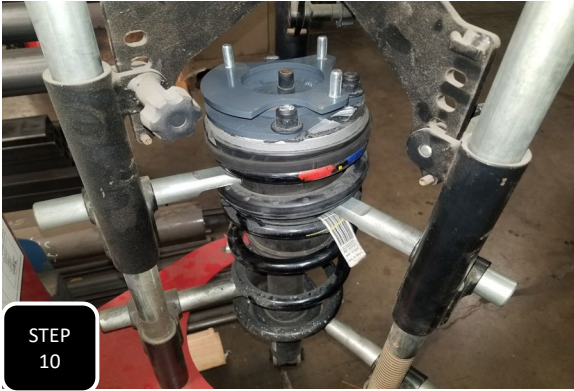


STEP
9



STEP
9

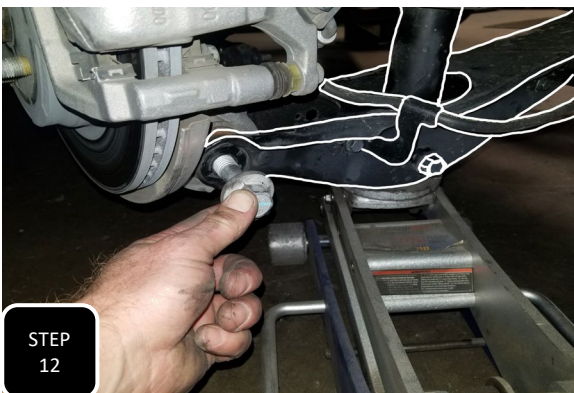
Step 9 Our spacer will rotate the strut top 55 degrees so the bottom of the shock will need to be rotated to return it to proper alignment with the top.



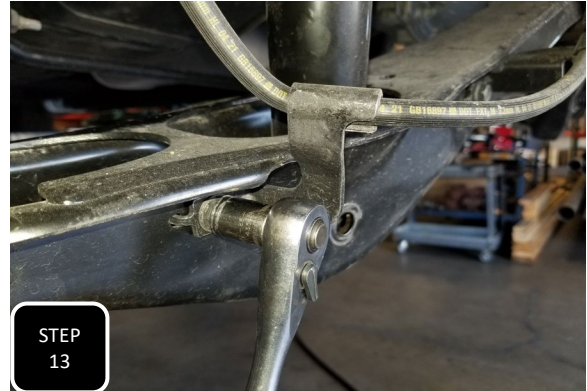
Step 10 Proper alignment between the top and bottom of the strut can be achieved by compressing the coil and rotating the bottom of the strut. If you do not have a coil compressor, you can attach the top of the strut to the truck and rotate the bottom, using channel locks, until the shock aligns with the control arm.



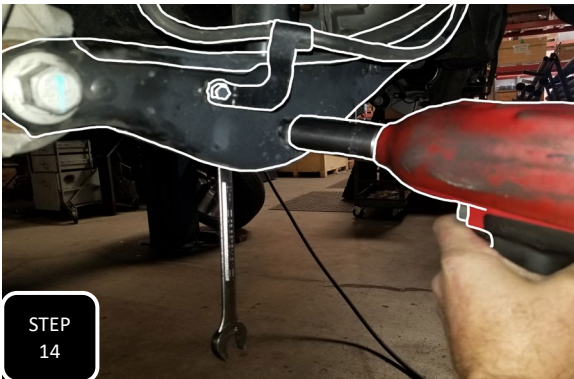
Step 11 Attach the strut using the provided nuts at the top and the factory bolt at the bottom. You can tighten down the upper nuts, but do not fully tighten the lower bolt until the vehicle is on the ground at ride height.



Step 12 You will need to compress the coil by applying pressure to the lower control arm with a jack until the control arm hole lines up with the spindle hole. Install the factory bolt and tighten to factory specs.



Step 13 Re-attach both brake line guide brackets to the lower control arm and tighten.



Step 14 Repeat steps 1-13 on the other side. When both sides have been installed and the truck is back on the ground at ride height, then tighten the lower strut bolt to factory specs.

-The headlights should be adjusted after modifying the stance of the vehicle.

-The vehicle's alignment will need to be adjusted.

-All suspension components should be re-torqued after 500 miles.