



**PART# 301960C**

**2019+ GM 1500 2WD/4WD**

**REAR FRAME SUPPORT KIT  
C-NOTCH**



4 HOUR INSTALL TIME

Components	Hardware	Hardware Pack #
(1)DRIVE SIDE FRAME SUPPORT	(8) 1/2-13 X 1 1/2" HEX CAP SCREW	
(1)PASS SIDE FRAME SUPPORT	(16) 1/2-13 NYLOCK NUT	
(1) 301960C-2D INNER BOLT PLATE	(24) 1/2" FLAT WASHER	
(1) 301960C-2P INNER BOLT PLATE	(8) 1/2" SPLIT LOCK WASHER	3019H-C-NOT
(2) 301960C-3 INNER NUT PLATE	(2) 3/8-16 NYLOCK NUT	
(2) 301960C-4 INNER NUT PLATE	(2) 3/8" FLAT WASHER	
(2) FLAT BUMP STOPS	(2) M8-1.25 X 20	
(1) 301960C-5 BRAKE LINE BRACKET	(2) M8-1.25 NYLOCK NUT	
	(4) M8 FLAT WASHER	

**NOTE: THIS KIT REQUIRES CUTTING AND DRILLING OF THE FRAME, THE BED RIB, AND THE EXHAUST**

Please double check the parts list before beginning installation to ensure all parts are present. If there is something missing, please contact Maxtrac Suspension (714) 630-0363. Please have the boxes present if parts are missing or damaged

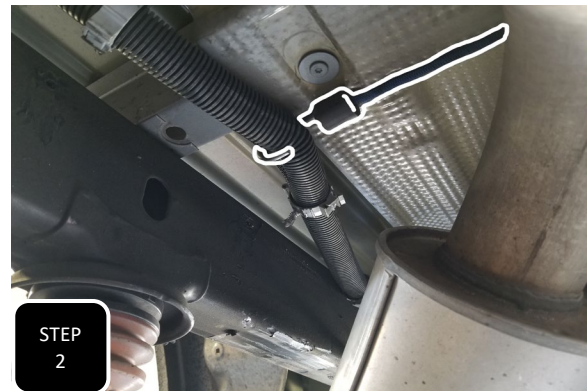
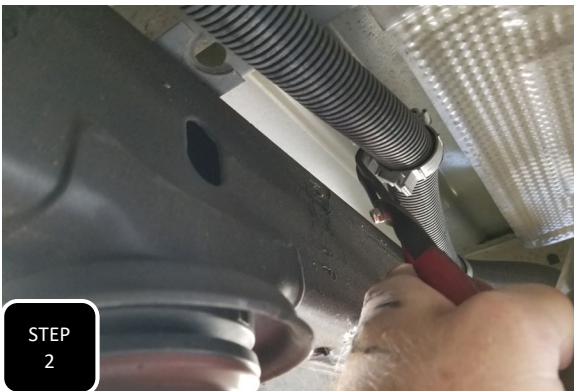
**PRIOR TO INSTALLATION:**

1. Factory service manual is recommended to have on hand.
2. Secure and properly block vehicle prior to beginning installation.
3. Always wear safety glasses when using power tools or working under the vehicle
- 4 Modification to any part will void the warranty associated with that product

AFTER REMOVING PARTS FROM VEHICLE, SAVE HARDWARE FOR REINSTALLATION



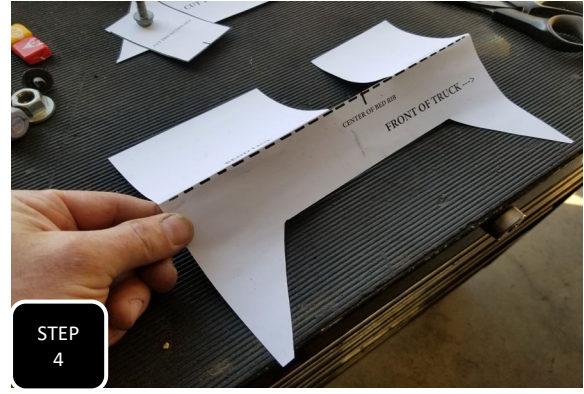
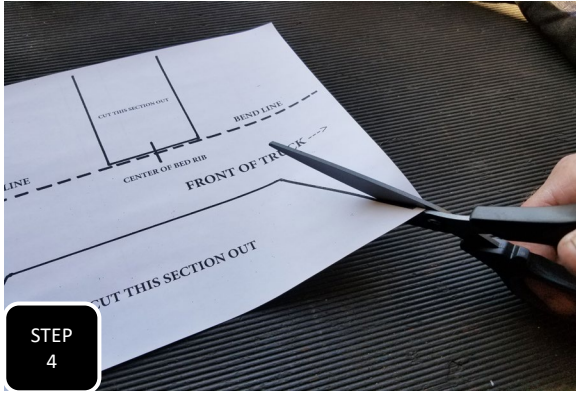
**Step 1** Jack up the rear of the truck and support under the frame, in front of the axle, with jack stands.



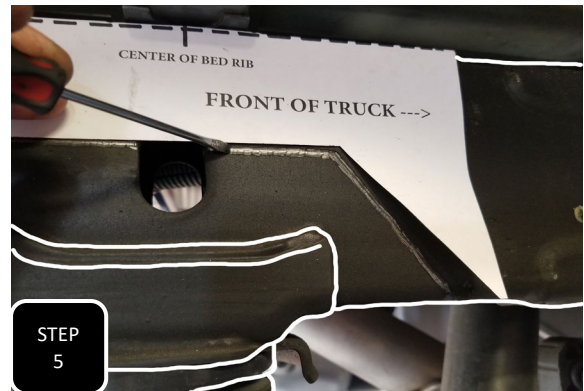
**Step 2** Separate the plastic guide clip attaching the wire harness on the inside of the passenger side of the frame, from the frame and hook it out of the way with a bungy cord or strap.



**Step 3** Unbolt the brake line guide bracket located on the inside of the driver's side frame and hook it out of the way with a bungy cord or strap.



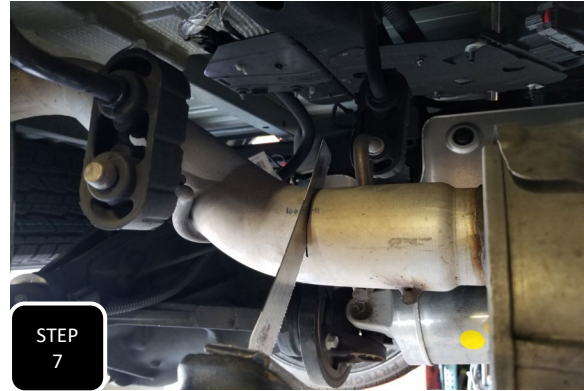
**Step 4** Cut out the two designated sections in the provided template and fold it to a 90 degree angle on the dashed line.



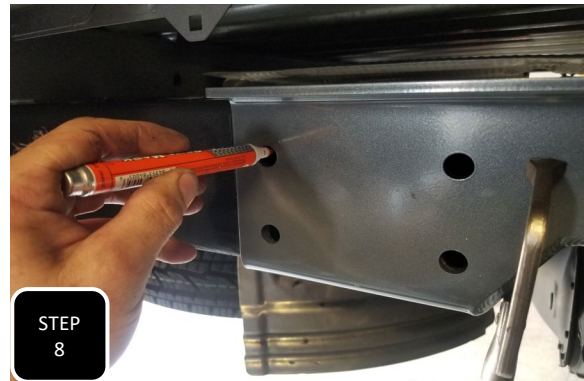
**Step 5** Bent with the writing outward, the template will line up with the outside of the passenger side of the frame and the inside of the driver's side frame. Using a small screw driver, scratch the under coat off along the inside of the notch cut out. Next, fold the template the other way and do the same with the outside of the driver's side frame and the inside of the passenger side frame.



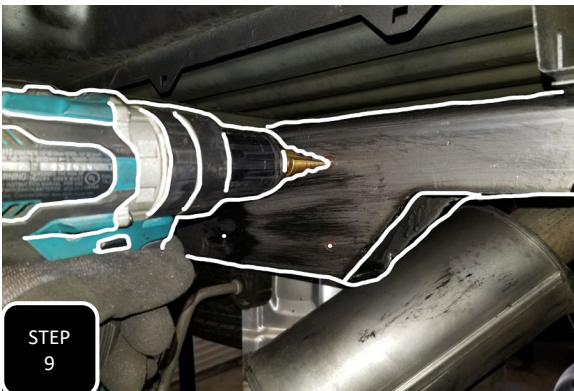
**Step 6** Using a suitable cutting devise such as a plasma cutter or a cut off wheel, cut out the notched section and clean up the edges with a sander. Test fit the C-notch and clearance as necessary until it fits flush to the frame.



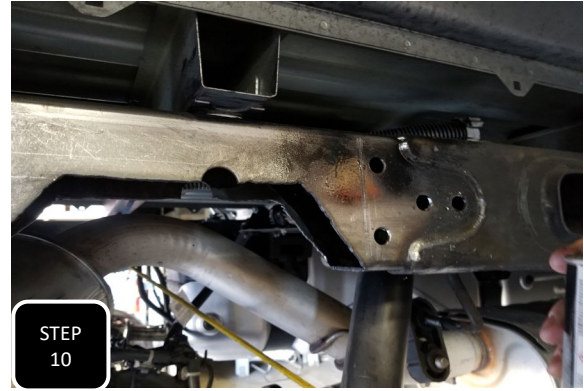
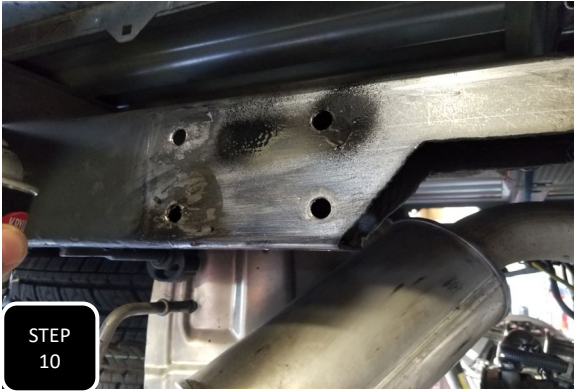
**Step 7** The factory exhaust will need to be cut off just before the axle. Start by spraying WD40 on all of the rubber bushings attaching the exhaust to the frame and then get the bushings started over the head of the hanger. Next, using a reciprocating saw, completely cut through the exhaust tubing just before the axle and then remove and discard.



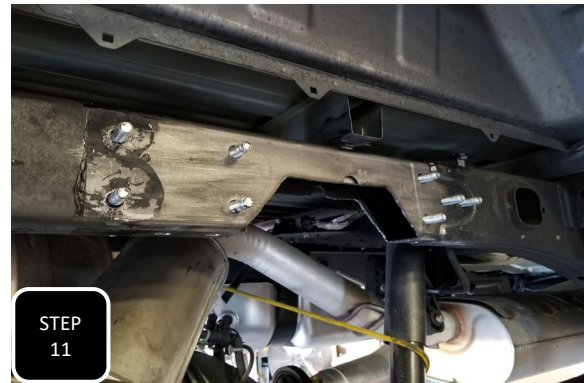
**Step 8** Clamp the C-notch to the frame and either mark the holes for drilling or more preferably, use a transfer punch to mark the 8 side holes and 4 holes underneath the frame.



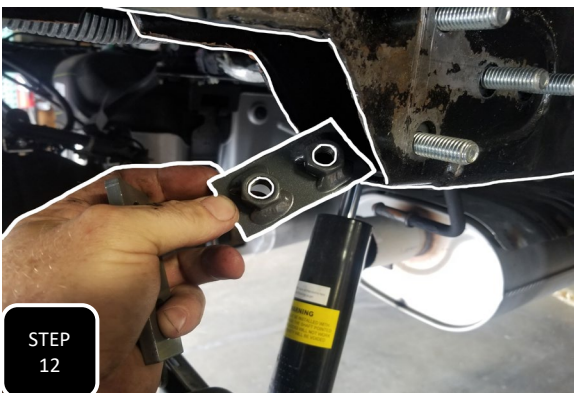
**Step 9** Using a power drill and 9/16" drill bit, drill out all 12 of your marked holes on each frame rail and then test fit the inner bolt plate. Enlarge or correct your holes until all 8 bolts slide through the holes and allow the inner plate to sit flat against the inside of the frame.



**Step 10** Smooth out any chunky spots of the factory under coat and then spray paint all raw surfaces of the factory frame for rust prevention.



**Step 11** Slide the inner support plate, with the 8 bolts welded to it, into the frame and poke the bolts through the holes that you just drilled. **NOTE: THE PLATES ARE SIDE SPECIFIC AND THE TRIANGULATED END NEEDS TO FACE THE FRONT OF THE TRUCK.**



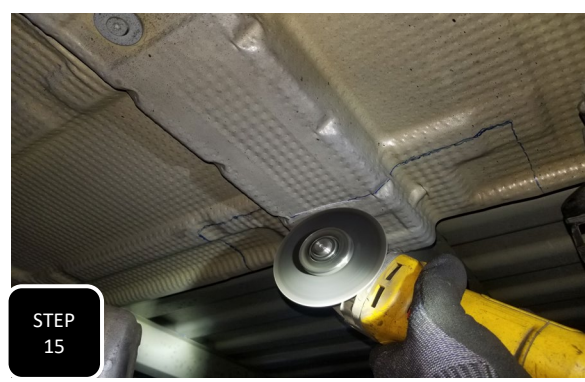
**Step 12** Slide the -3 and -4 nut plates into the bottom of the frame. The plate with the nuts that are closer together will go into the cut out towards the front of the truck and the other towards the rear of the truck.



**Step 13** First install the bump stops onto both frame supports. Next, slide the frame support onto the frame and loosely start all of the mounting hardware. Once all of the hardware is started, then tighten down the side nuts first and the bottom bolts last.



**Step 14** Locate the heat shield on the pass side of the truck above the rear differential. Draw a straight line 4 inches from the edge and as long as about 5 inches in front and behind the bed rib. Next, measure and draw a line 4 inches from the bed rib towards the front of the truck and 3.5 inches from the rib towards the rear of the truck.



**Step 15** This marked section of heat shield will now need to be cut out using a suitable cutting device such as a cut off wheel.



**Step 16** Once all the way cut out, remove the mounting bolt in the cut area and remove the cut section of heat shield.



**Step 17** Measure and mark a line 15 inches out from the heat shield that you just cut out then draw a cut line up both sides and along the top .



**Step 18** Using a suitable cutting device such as a cut off wheel, completely cut out and remove this section of bed rib above the rear differential.



**Step 19** Clean up any and all sharp edges and then spray paint to prevent rust.

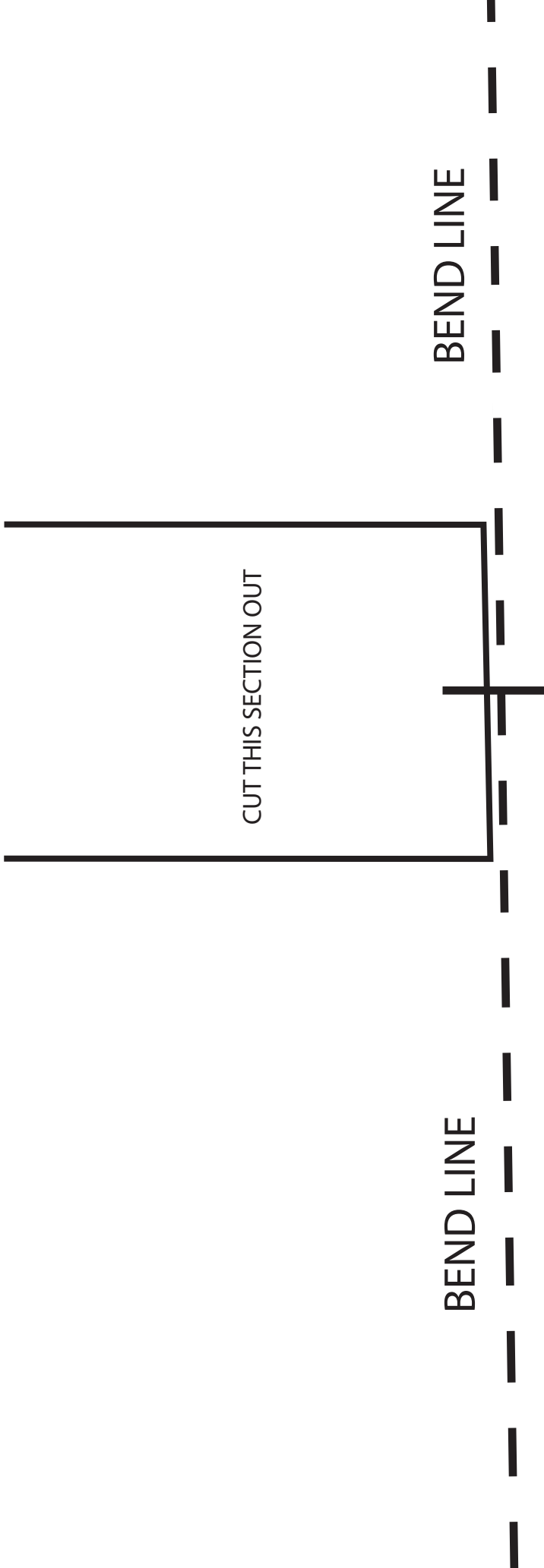


**Step 20** Install the bracket line relocation bracket to the frame using the factory bolts and then attach the factory bracket to the new bracket using the provided 8mm bolts, nuts, and washers.



**AT A 6" DROP, YOU WILL HAVE ABOUT A 3" GAP BETWEEN THE AXLE AND BUMP STOP AT RIDE HEIGHT.**





BEND LINE

BEND LINE

CENTER OF BED RIB

CUT THIS SECTION OUT

FRONT OF TRUCK ---->



CUT THIS SECTION OUT